

ALPI Antibody
Purified Mouse Monoclonal Antibody
Catalog # AO2312a**Specification****ALPI Antibody - Product Information**

Application	WB, FC, E
Primary Accession	P09923
Reactivity	Human
Host	Mouse
Clonality	Monoclonal
Isotype	IgG1
Calculated MW	56.8kDa KDa

Description

There are at least four distinct but related alkaline phosphatases: intestinal, placental, placental-like, and liver/bone/kidney (tissue non-specific). The intestinal alkaline phosphatase gene encodes a digestive brush-border enzyme. This enzyme is upregulated during small intestinal epithelial cell differentiation.

Immunogen

Purified recombinant fragment of human ALPI (AA: 397-458) expressed in E. Coli.

Formulation

Ascitic fluid containing 0.03% sodium azide.

ALPI Antibody - Additional Information

Gene ID 248

Other Names

Intestinal-type alkaline phosphatase, IAP, Intestinal alkaline phosphatase, 3.1.3.1, ALPI

Dilution

WB~~1/500 - 1/2000

FC~~1/200 - 1/400

E~~1/10000

Storage

Maintain refrigerated at 2-8°C for up to 6 months. For long term storage store at -20°C in small aliquots to prevent freeze-thaw cycles.

Precautions

ALPI Antibody is for research use only and not for use in diagnostic or therapeutic procedures.

ALPI Antibody - Protein Information

Name ALPI

Function

Alkaline phosphatase that can hydrolyze various phosphate compounds.

Cellular Location

Cell membrane {ECO:0000250|UniProtKB:P15693}; Lipid-anchor, GPI-anchor
{ECO:0000250|UniProtKB:P15693}

ALPI Antibody - Protocols

Provided below are standard protocols that you may find useful for product applications.

- [Western Blot](#)
- [Blocking Peptides](#)
- [Dot Blot](#)
- [Immunohistochemistry](#)
- [Immunofluorescence](#)
- [Immunoprecipitation](#)
- [Flow Cytometry](#)
- [Cell Culture](#)

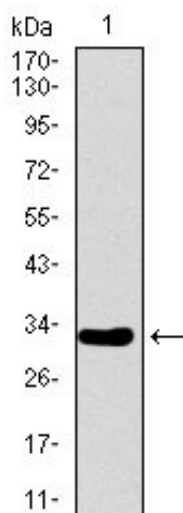
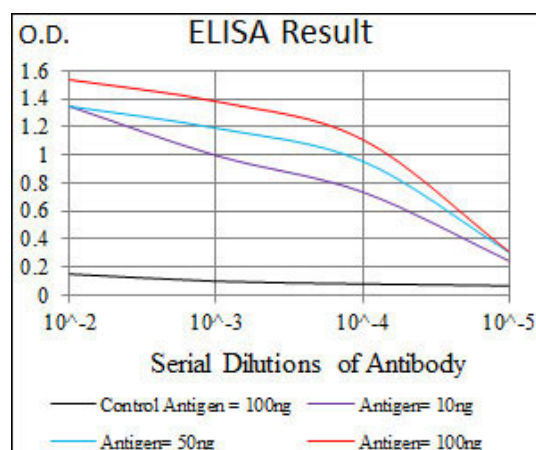


Figure 1: Western blot analysis using ALPI mAb against human ALPI recombinant protein. (Expected MW is 31.9 kDa)

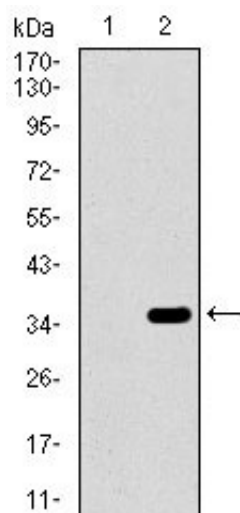


Figure 2: Western blot analysis using ALPI mAb against HEK293 (1) and ALPI (AA: 397-458)-hIgGFc transfected HEK293 (2) cell lysate.

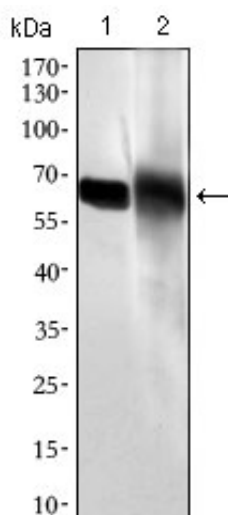


Figure 3: Western blot analysis using ALPI mouse mAb against HL60 (1) and HepG2 (2) cell lysate.

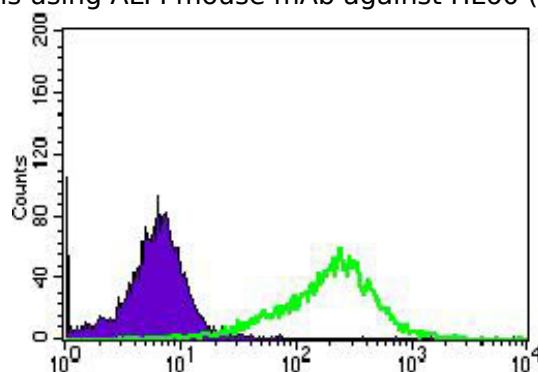


Figure 5: Flow cytometric analysis of HepG2 cells using ALPI mouse mAb (green) and negative control (purple).

ALPI Antibody - References

1. Virchows Arch. 2012 Feb;460(2):157-61.
2. World J Gastroenterol. 2012 Jul 7;18(25):3254-9.